

International Marine Contractors Association

Improving performance in the marine contracting industry

2018 Safety Statistics

June 2018



2018 at a glance



728
million man-hrs
total

417
million man-hrs
offshore



Line of fire
Most common
cause of LTIs
(2017: same)

5

fatalities reported
(2017: 5)



475.4
Safety Observation Frequency
Rate (2017: 434.7)

IMCA safety data is available on-line at
<https://www.imca-int.com/data/safety/>



LTIFR
Lost Time Injury frequency Rate
(Fatalities + LTIs) x 1,000,000 / Total man-hours

0.39
Total LTIFR
(2017: 0.42)

0.48
Offshore LTIFR
(2017: 0.48)



TRIR
Total recordable injury Rate
(Fatalities + LTIs + Restricted Work Cases + Medical
Treatment cases) x 1,000,000 / Total man-hours

1.70
Total TRIR
(2017: 1.67)

2.09
Offshore TRIR
(2017: 1.90)

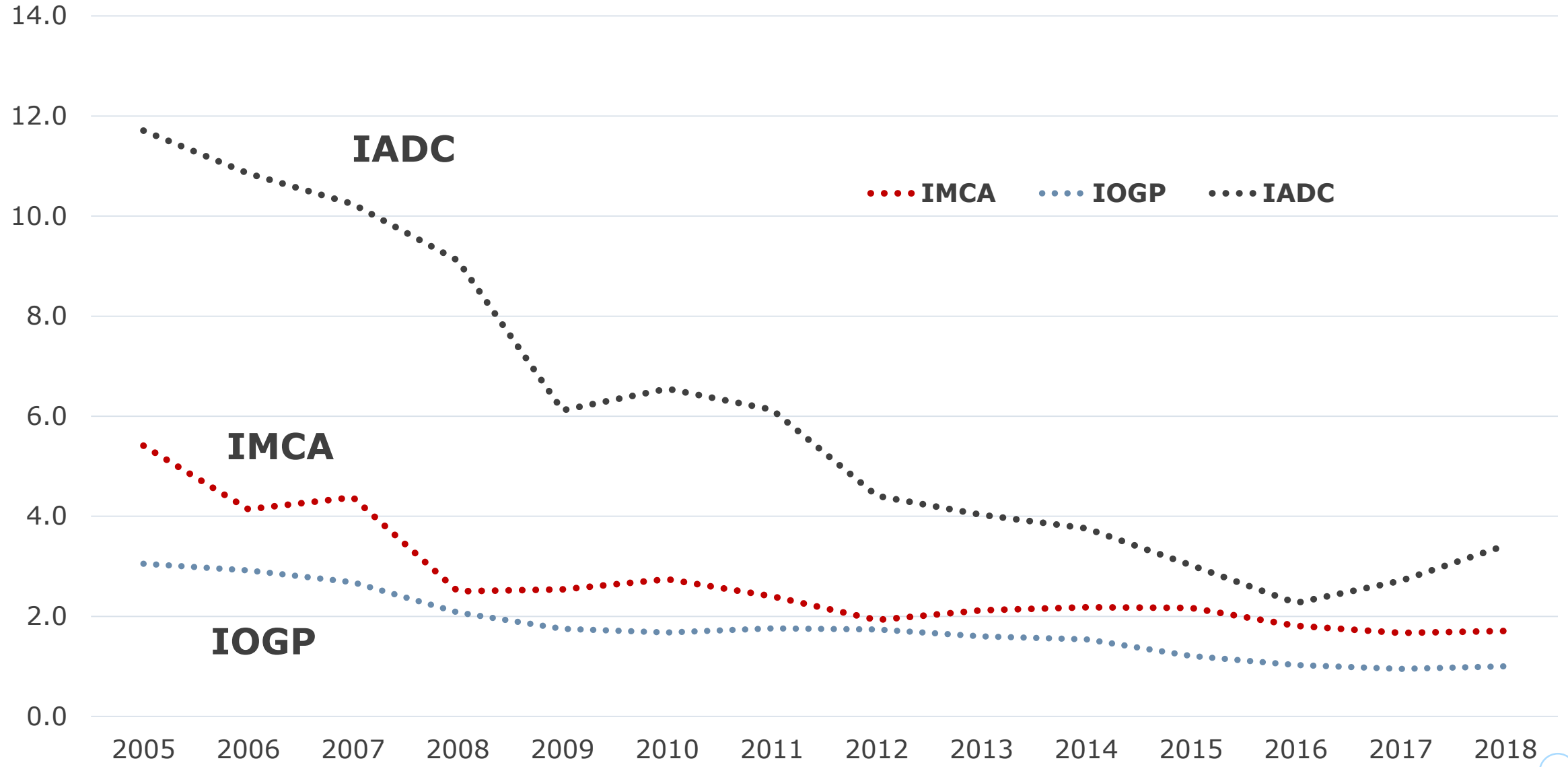


FAR
Fatal Accident Rate
(FAR = Fatalities x 100,000,000 / Total man-hours)

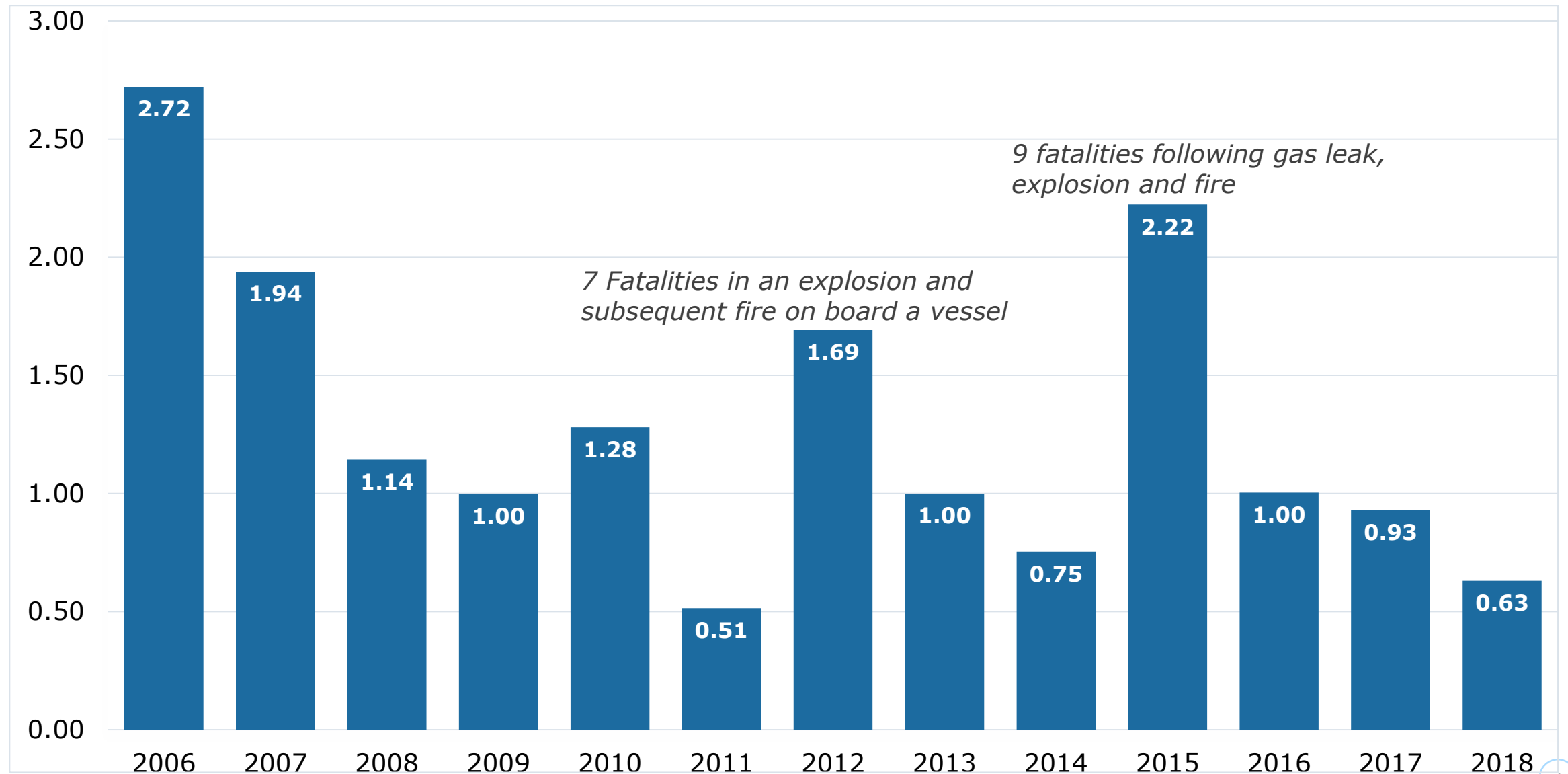
0.63
Total FAR
(2017: 0.93)

0.48
Offshore FAR
(2017: 1.32)

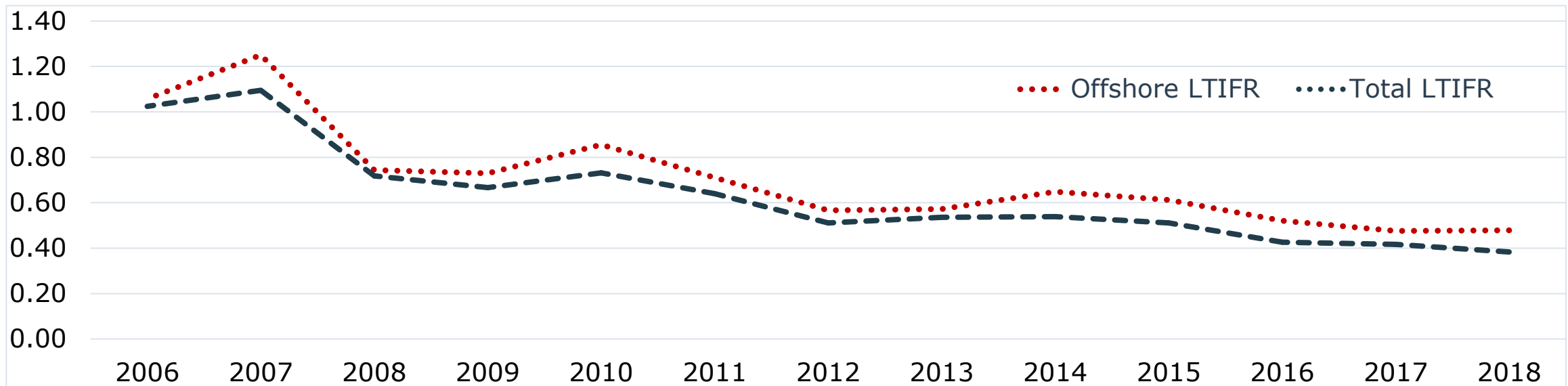
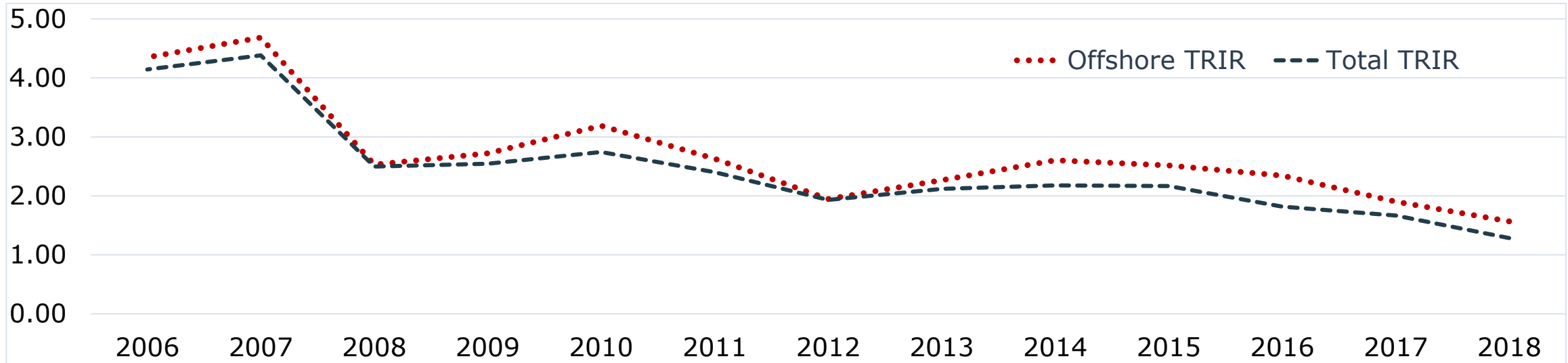
Comparison with other Associations



Fatal Accident Rate

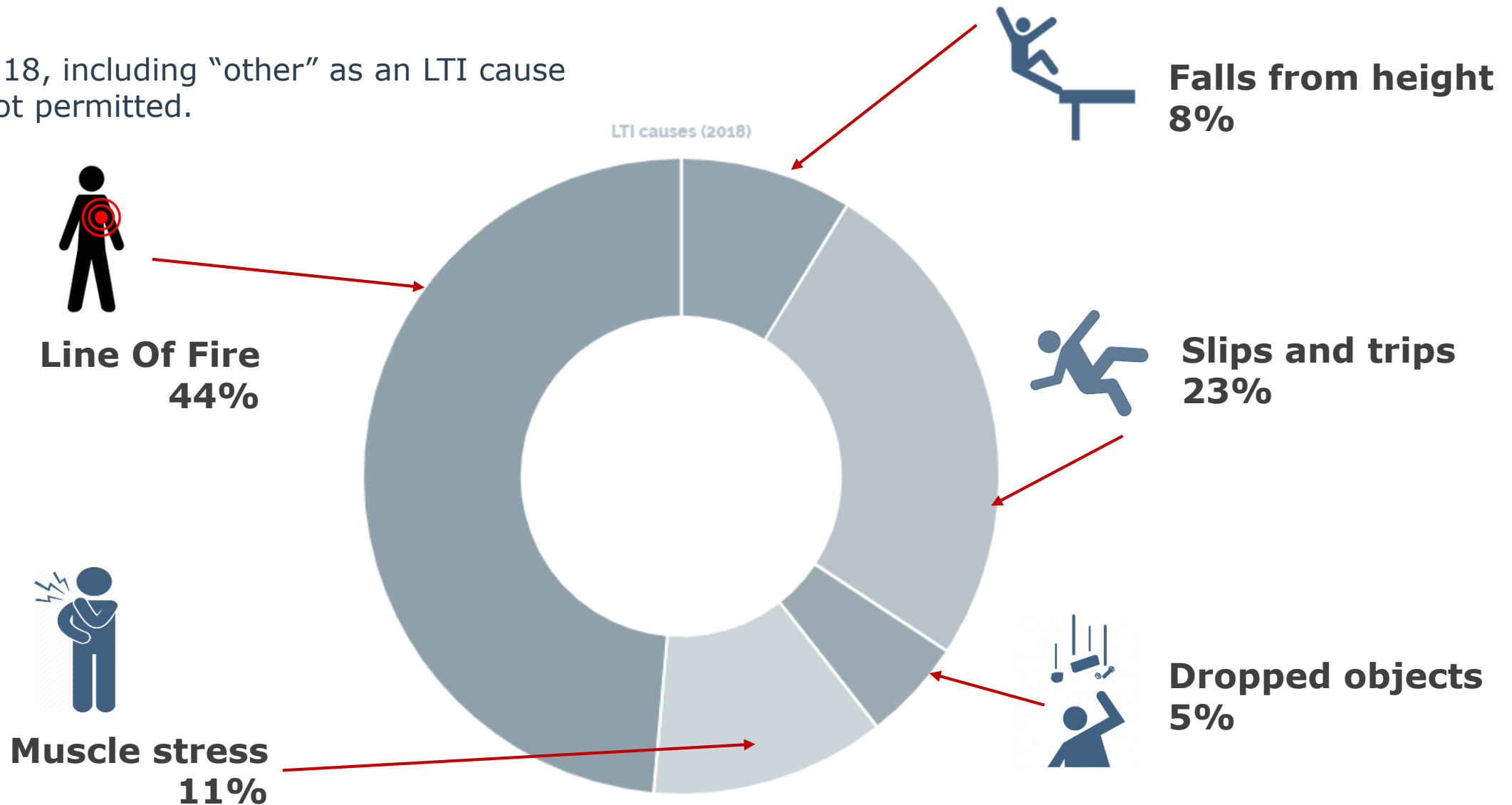


TRIR and LTIFR

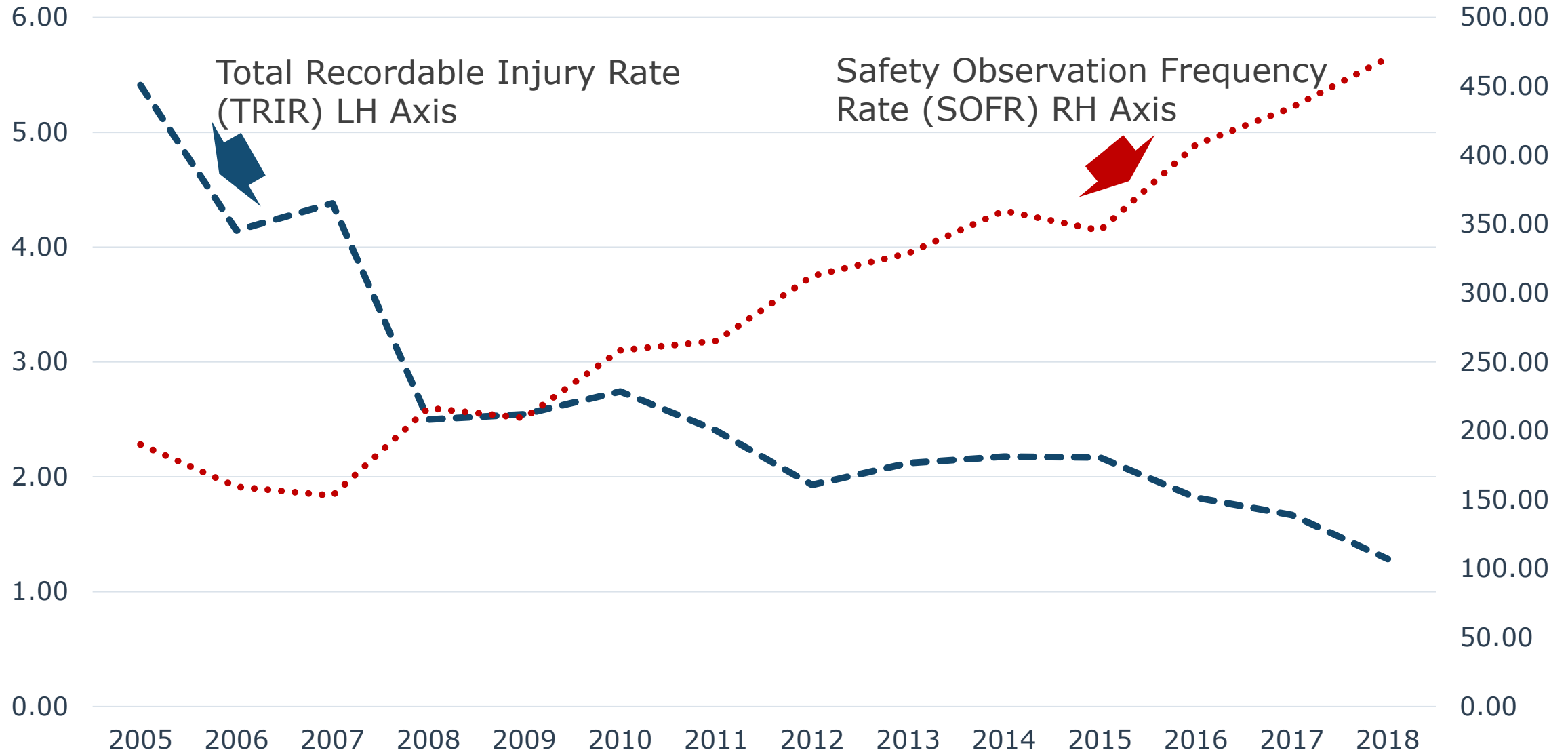


Main causes of LTIs

- For 2018, including "other" as an LTI cause was not permitted.



Observations v Recordables



Company banding

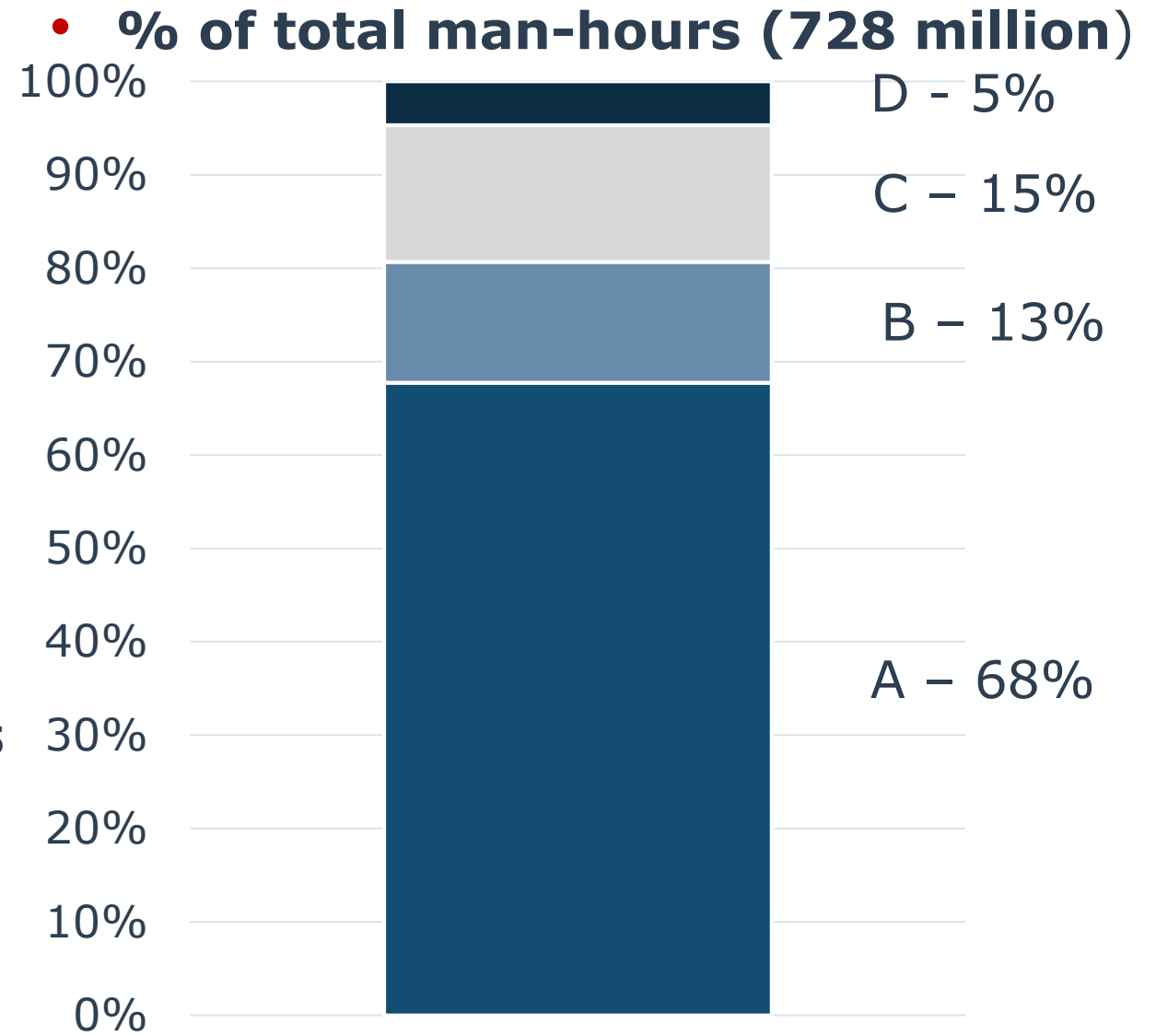
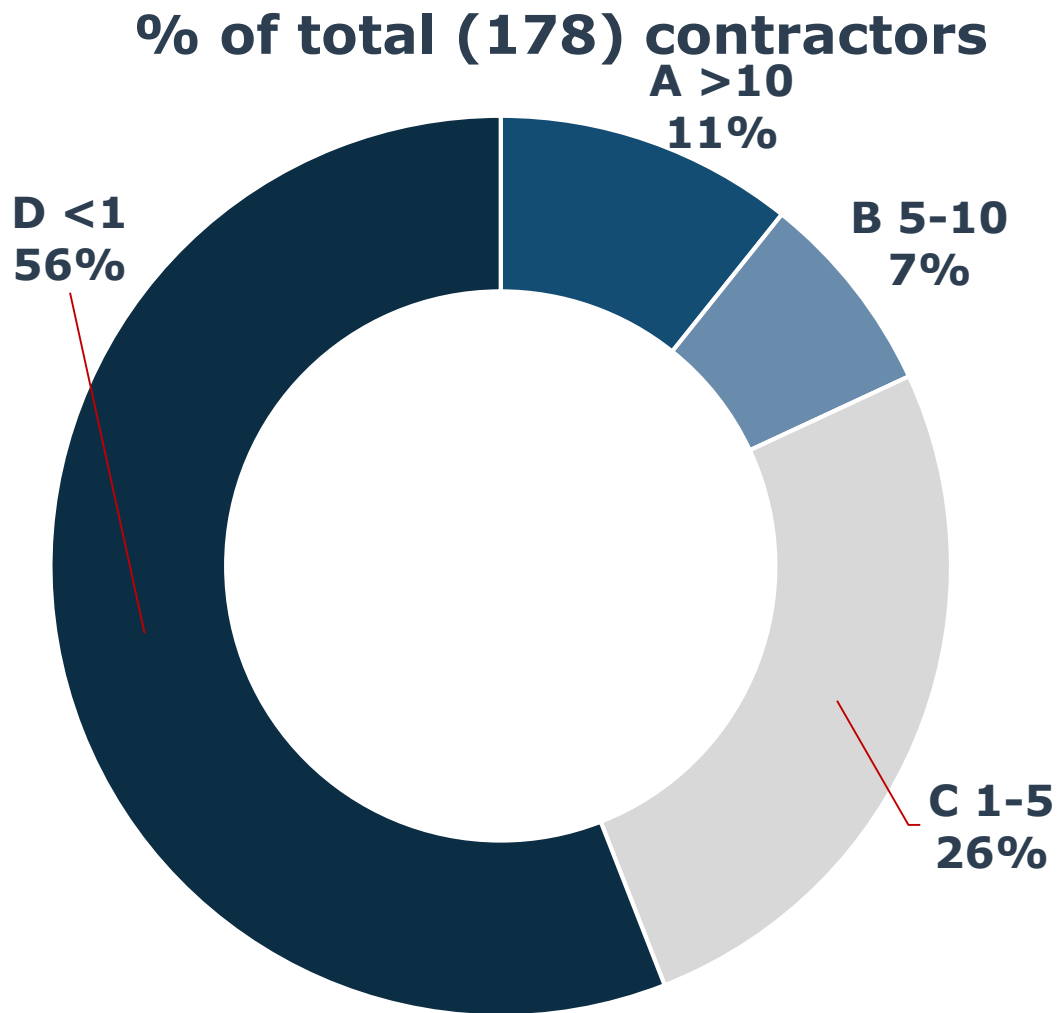


- Contractors divided into four bands
- Allowing peer group comparison / benchmarking between companies of similar size

Band man-hours

- A >10 million
- B 5-10 million
- C 1-5 million
- D <1 million

Company banding

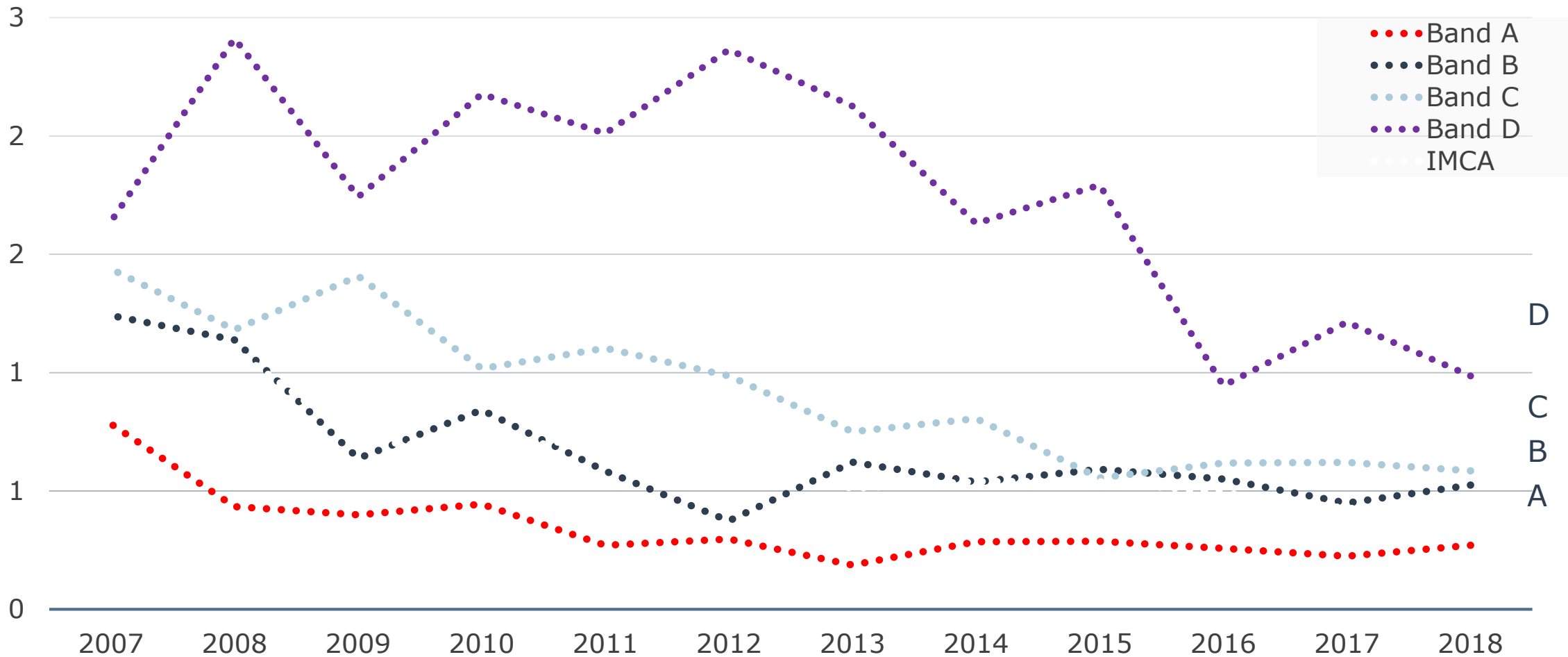


LTIFR by Company Band, n=178



A = >10M manhours, B = 5-10M mh, C = 1-5M mh, D = <1M mh

A = 11% n, 68% mh, B = 7% n, 13% mh, C = 26% n, 15% mh, D = 56% n, 4% mh

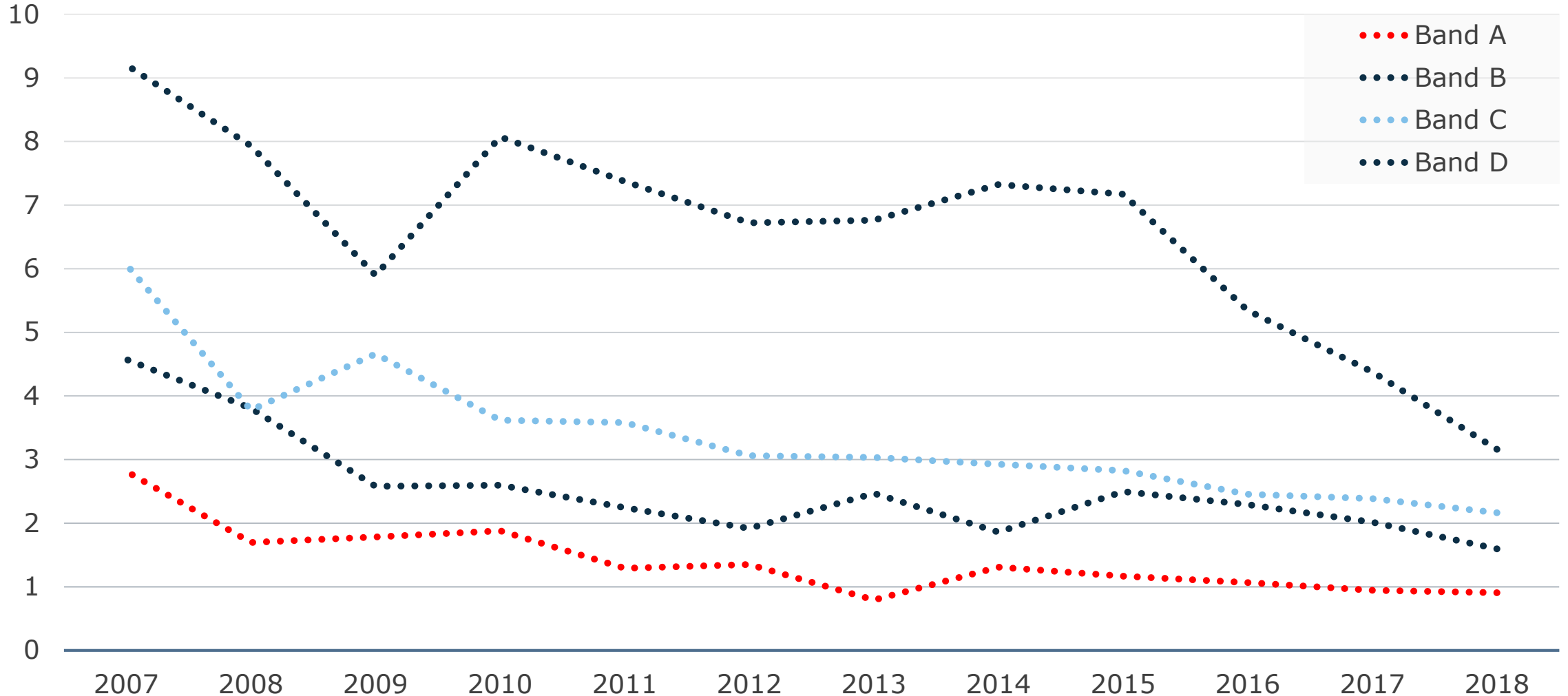


TRIR by company band



A = >10M manhours, B = 5-10M mh, C = 1-5M mh, D = <1M mh

A = 11% n, 68% mh, B = 7% n, 13% mh, C = 26% n, 15% mh, D = 56% n, 4% mh



Definitions

- Total company hours - hours worked by employees across *the entire organisation*, including overtime.
- Offshore hours - hours worked on vessels, barges, boats or any other offshore structures or installations, based on a 12-hour day.
- Lost time injury frequency rate (LTIFR) - the number of LTIs (including fatalities) per million hours worked.
- Total recordable injuries rate (TRIR) - the number of recordable injuries (including fatalities and LTIs) per million hours worked.
- Safety observations frequency rate (SOFR) - the number of safety observations per 200,000 hours worked.
- Fatal accident rate (FAR) - the number of fatalities per 100 million hours worked.
- Data for 1997-2017 was separated into offshore/onshore categories, with an 'overall' combining the two. From 2018, data is collected and reported as offshore/total, with the historical 'overall' figure used for comparison.

Improving performance in the
marine contracting industry